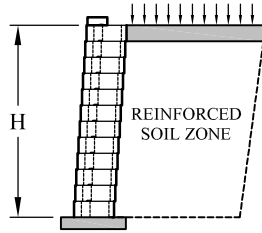
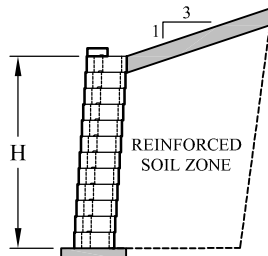


Estimating Chart for Geosynthetic Reinforcement with Vertica Pro[®] Retaining Wall Systems 250 PSF Surcharge



	Clay and Silt Soils $\phi = 26^\circ$ $\gamma = 120 \text{ pcf (19 kN/m}^3\text{)}$	Silty / Clayey Sand Soil $\phi = 30^\circ$ $\gamma = 120 \text{ pcf (19 kN/m}^3\text{)}$	Clean Sand and Gravel Soil $\phi = 34^\circ$ $\gamma = 120 \text{ pcf (19 kN/m}^3\text{)}$
4'-0" (1200 mm) 6 Courses			
6'-0" (1800 mm) 9 Courses			
8'-0" (2400 mm) 12 Courses			
10'-0" (3000 mm) 15 Courses	<div style="border: 1px solid black; padding: 5px; width: fit-content; margin: 10px auto;"> Wall design to be performed by a professional engineer </div>		
12'-0" (3600 mm) 18 Courses	<div style="border: 1px solid black; padding: 5px; width: fit-content; margin: 10px auto;"> Wall design to be performed by a professional engineer </div>		

Estimating Chart for Geosynthetic Reinforcement with Vertica Pro[®] Retaining Wall Systems 3:1 Crest Slope



	Clay and Silt Soils $\phi = 26^\circ$ $\gamma = 120 \text{ pcf (19 kN/m}^3\text{)}$	Silty / Clayey Sand Soil $\phi = 30^\circ$ $\gamma = 120 \text{ pcf (19 kN/m}^3\text{)}$	Clean Sand and Gravel Soil $\phi = 34^\circ$ $\gamma = 120 \text{ pcf (19 kN/m}^3\text{)}$
4'-0" (1200 mm) 6 Courses	5.5 FT (1650 mm) 5.5 FT (1650 mm)		
6'-0" (1800 mm) 9 Courses	7.5 FT (2250 mm) 7.5 FT (2250 mm) 7.5 FT (2250 mm)	7.0 FT (2100 mm) 7.0 FT (2100 mm) 7.0 FT (2100 mm)	6.0 FT (1800 mm) 6.0 FT (1800 mm) 6.0 FT (1800 mm)
8'-0" (2400 mm) 12 Courses	9.5 FT (2850 mm) 9.5 FT (2850 mm) 9.5 FT (2850 mm) 9.5 FT (2850 mm)	8.5 FT (2550 mm) 8.5 FT (2550 mm) 8.5 FT (2550 mm) 8.5 FT (2550 mm)	7.5 FT (2250 mm) 7.5 FT (2250 mm) 7.5 FT (2250 mm) 7.5 FT (2250 mm)
10'-0" (3000 mm) 15 Courses	Wall design to be performed by a professional engineer	10.0 FT (3000 mm) 10.0 FT (3000 mm) 10.0 FT (3000 mm) 10.0 FT (3000 mm) 10.0 FT (3000 mm)	9.0 FT (2700 mm) 9.0 FT (2700 mm) 9.0 FT (2700 mm) 9.0 FT (2700 mm) 9.0 FT (2700 mm)
12'-0" (3600 mm) 18 Courses	Wall design to be performed by a professional engineer	11.5 FT (3450 mm) 11.5 FT (3450 mm) 11.5 FT (3450 mm) 11.5 FT (3450 mm) 11.5 FT (3450 mm) 11.5 FT (3450 mm)	10.5 FT (3150 mm) 10.5 FT (3150 mm) 10.5 FT (3150 mm) 10.5 FT (3150 mm) 10.5 FT (3150 mm) 10.5 FT (3150 mm)