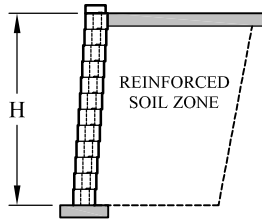
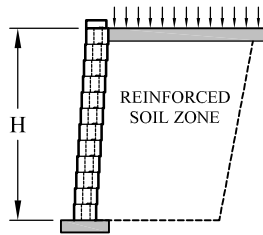


Estimating Chart for Geosynthetic Reinforcement with Vertica[®] Retaining Wall Systems No Slopes and No Surcharges



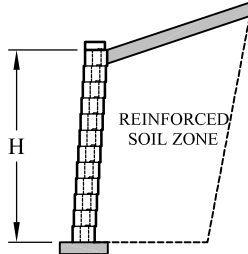
	Clay and Silt Soils $\phi = 26^\circ$ $\gamma = 120 \text{ pcf (19 kN/m}^3\text{)}$	Silty / Clayey Sand Soil $\phi = 30^\circ$ $\gamma = 120 \text{ pcf (19 kN/m}^3\text{)}$	Clean Sand and Gravel Soil $\phi = 34^\circ$ $\gamma = 120 \text{ pcf (19 kN/m}^3\text{)}$
4'-0" (1200 mm) 6 Courses			
6'-0" (1800 mm) 9 Courses			
8'-0" (2400 mm) 12 Courses			
10'-0" (3000 mm) 15 Courses			
12'-0" (3600 mm) 18 Courses			

Estimating Chart for Geosynthetic Reinforcement with Vertica[®] Retaining Wall Systems 250 PSF Surcharge



	Clay and Silt Soils $\phi = 26^\circ$ $\gamma = 120 \text{ pcf (19 kN/m}^3\text{)}$	Silty / Clayey Sand Soil $\phi = 30^\circ$ $\gamma = 120 \text{ pcf (19 kN/m}^3\text{)}$	Clean Sand and Gravel Soil $\phi = 34^\circ$ $\gamma = 120 \text{ pcf (19 kN/m}^3\text{)}$
4'-0" (1200 mm) 6 Courses			
6'-0" (1800 mm) 9 Courses			
8'-0" (2400 mm) 12 Courses			
10'-0" (3000 mm) 15 Courses			
12'-0" (3600 mm) 18 Courses			

Estimating Chart for Geosynthetic Reinforcement with Vertica[®] Retaining Wall Systems 3:1 Crest Slope



	Clay and Silt Soils $\phi = 26^\circ$ $\gamma = 120 \text{ pcf (19 kN/m}^3\text{)}$	Silty / Clayey Sand Soil $\phi = 30^\circ$ $\gamma = 120 \text{ pcf (19 kN/m}^3\text{)}$	Clean Sand and Gravel Soil $\phi = 34^\circ$ $\gamma = 120 \text{ pcf (19 kN/m}^3\text{)}$
4'-0" (1200 mm) 6 Courses	5.0 FT (1500 mm) 5.0 FT (1500 mm) 5.0 FT (1500 mm)	4.5 FT (1350 mm) 4.5 FT (1350 mm)	4.0 FT (1200 mm) 4.0 FT (1200 mm)
6'-0" (1800 mm) 9 Courses	7.0 FT (2100 mm) 7.0 FT (2100 mm) 7.0 FT (2100 mm) 7.0 FT (2100 mm)	6.0 FT (1800 mm) 6.0 FT (1800 mm) 6.0 FT (1800 mm)	5.5 FT (1650 mm) 5.5 FT (1650 mm) 5.5 FT (1650 mm)
8'-0" (2400 mm) 12 Courses	9.0 FT (2700 mm) 9.0 FT (2700 mm) 9.0 FT (2700 mm) 9.0 FT (2700 mm) 9.0 FT (2700 mm)	8.0 FT (2400 mm) 8.0 FT (2400 mm) 8.0 FT (2400 mm) 8.0 FT (2400 mm)	7.0 FT (2100 mm) 7.0 FT (2100 mm) 7.0 FT (2100 mm) 7.0 FT (2100 mm)
10'-0" (3000 mm) 15 Courses	Wall design to be performed by a professional engineer	9.5 FT (2850 mm) 9.5 FT (2850 mm) 9.5 FT (2850 mm) 9.5 FT (2850 mm) 9.5 FT (2850 mm)	8.5 FT (2550 mm) 8.5 FT (2550 mm) 8.5 FT (2550 mm) 8.5 FT (2550 mm) 8.5 FT (2550 mm)
12'-0" (3600 mm) 18 Courses	Wall design to be performed by a professional engineer	11.0 FT (3330 mm) 11.0 FT (3330 mm) 11.0 FT (3330 mm) 11.0 FT (3330 mm) 11.0 FT (3330 mm)	10.0 FT (3000 mm) 10.0 FT (3000 mm) 10.0 FT (3000 mm) 10.0 FT (3000 mm) 10.0 FT (3000 mm)