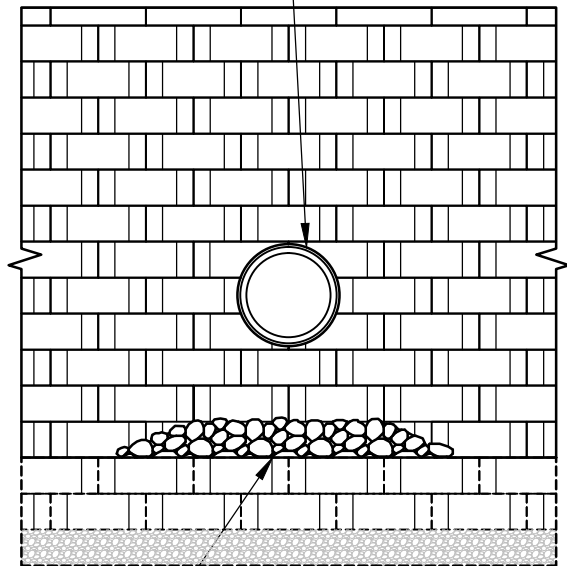
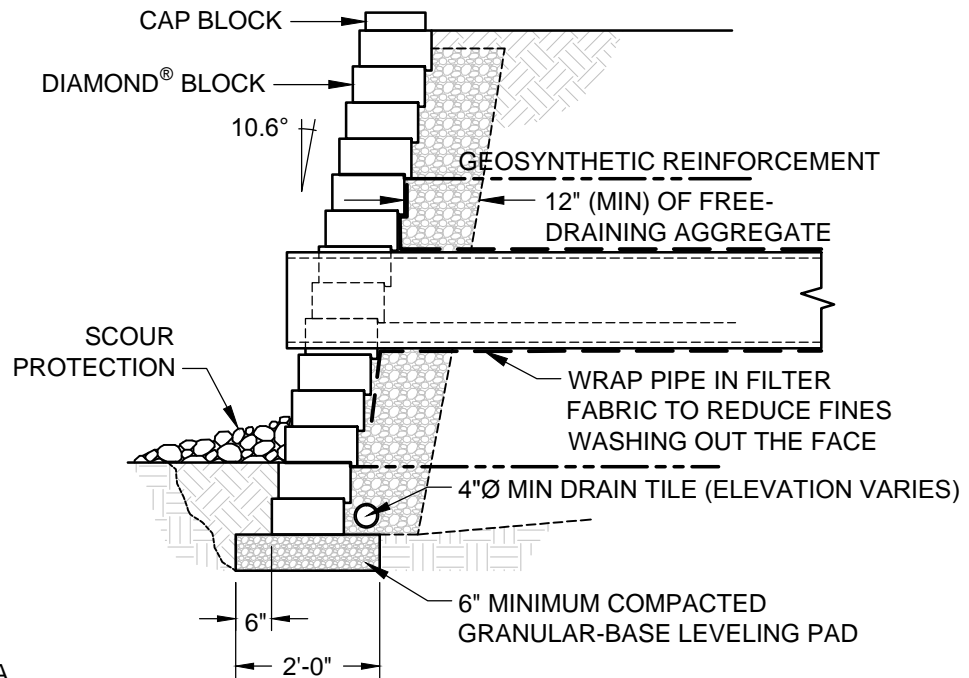


HAND CUT BLOCK UNITS  
TO WITHIN 1/2" OF PIPE



SCOUR PROTECTION - AS  
REQUIRED USE RIPRAP OR  
PRECAST SLAB IN OUTLET AREA

FACE VIEW



SECTION VIEW



© 2015 Anchor Wall Engineering, LLC  
© and ™ Anchor Wall Systems, Inc.  
www.anchorwall.com

This drawing is for illustrative  
purposes only and should not be  
used for construction without the  
signature of a registered  
professional engineer.

## Diamond® Beveled Face Retaining Wall System

### Typical Details for Small Utilities Through Wall

Scale:  
3/8" = 1'-0"

Drawn by:  
SB

Date:  
----

Drawing number:  
D1BV23