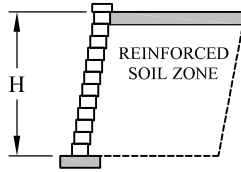
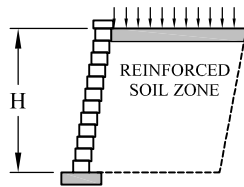


# Estimating Chart for Geosynthetic Reinforcement with Diamond<sup>®</sup> 9D Retaining Wall Systems No Slopes and No Surcharges



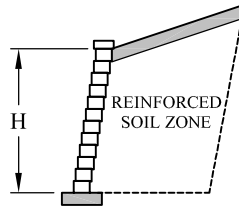
	Clay and Silt Soils $\phi = 26^\circ$ $\gamma = 120 \text{ pcf (19 kN/m}^3\text{)}$	Silty / Clayey Sand Soil $\phi = 30^\circ$ $\gamma = 120 \text{ pcf (19 kN/m}^3\text{)}$	Clean Sand and Gravel Soil $\phi = 34^\circ$ $\gamma = 120 \text{ pcf (19 kN/m}^3\text{)}$
4'-0" (1200 mm) 6 Courses	<p>4.0FT. (1200 mm) 4.0FT. (1200 mm) 4.0FT. (1200 mm)</p>	<p>4.0FT. (1200 mm) 4.0FT. (1200 mm) 4.0FT. (1200 mm)</p>	<p>4.0FT. (1200 mm) 4.0FT. (1200 mm) 4.0FT. (1200 mm)</p>
6'-0" (1800 mm) 9 Courses	<p>5.0FT. (1500 mm) 5.0FT. (1500 mm) 5.0FT. (1500 mm) 5.0FT. (1500 mm) 5.0FT. (1500 mm)</p>	<p>5.0FT. (1500 mm) 5.0FT. (1500 mm) 5.0FT. (1500 mm) 5.0FT. (1500 mm) 5.0FT. (1500 mm)</p>	<p>4.5FT. (1350 mm) 4.5FT. (1350 mm) 4.5FT. (1350 mm) 4.5FT. (1350 mm) 4.5FT. (1350 mm)</p>
8'-0" (2400 mm) 12 Courses	<p>6.5FT. (1950 mm) 6.5FT. (1950 mm) 6.5FT. (1950 mm) 6.5FT. (1950 mm) 6.5FT. (1950 mm) 6.5FT. (1950 mm) 6.5FT. (1950 mm)</p>	<p>6.5FT. (1950 mm) 6.5FT. (1950 mm) 6.5FT. (1950 mm) 6.5FT. (1950 mm) 6.5FT. (1950 mm) 6.5FT. (1950 mm) 6.5FT. (1950 mm)</p>	<p>6.0FT. (1800 mm) 6.0FT. (1800 mm) 6.0FT. (1800 mm) 6.0FT. (1800 mm) 6.0FT. (1800 mm) 6.0FT. (1800 mm) 6.0FT. (1800 mm)</p>

# Estimating Chart for Geosynthetic Reinforcement with Diamond<sup>®</sup> 9D Retaining Wall Systems 250 PSF Surcharge



	Clay and Silt Soils $\phi = 26^\circ$ $\gamma = 120 \text{ pcf (19 kN/m}^3\text{)}$	Silty / Clayey Sand Soil $\phi = 30^\circ$ $\gamma = 120 \text{ pcf (19 kN/m}^3\text{)}$	Clean Sand and Gravel Soil $\phi = 34^\circ$ $\gamma = 120 \text{ pcf (19 kN/m}^3\text{)}$
4'-0" (1200 mm) 6 Courses			
6'-0" (1800 mm) 9 Courses			
8'-0" (2400 mm) 12 Courses			

# Estimating Chart for Geosynthetic Reinforcement with Diamond® 9D Retaining Wall Systems 3:1 Crest Slope



	Clay and Silt Soils $\phi = 26^\circ$ $\gamma = 120 \text{ pcf (19 kN/m}^3\text{)}$	Silty / Clayey Sand Soil $\phi = 30^\circ$ $\gamma = 120 \text{ pcf (19 kN/m}^3\text{)}$	Clean Sand and Gravel Soil $\phi = 34^\circ$ $\gamma = 120 \text{ pcf (19 kN/m}^3\text{)}$
4'-0" (1200 mm) 6 Courses			
6'-0" (1800 mm) 9 Courses			
8'-0" (2400 mm) 12 Courses			