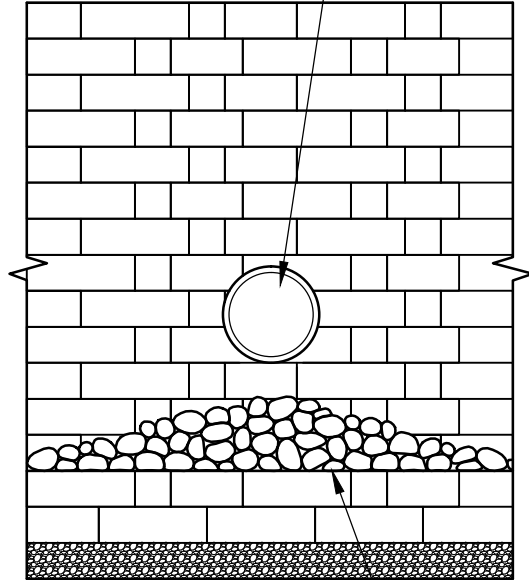
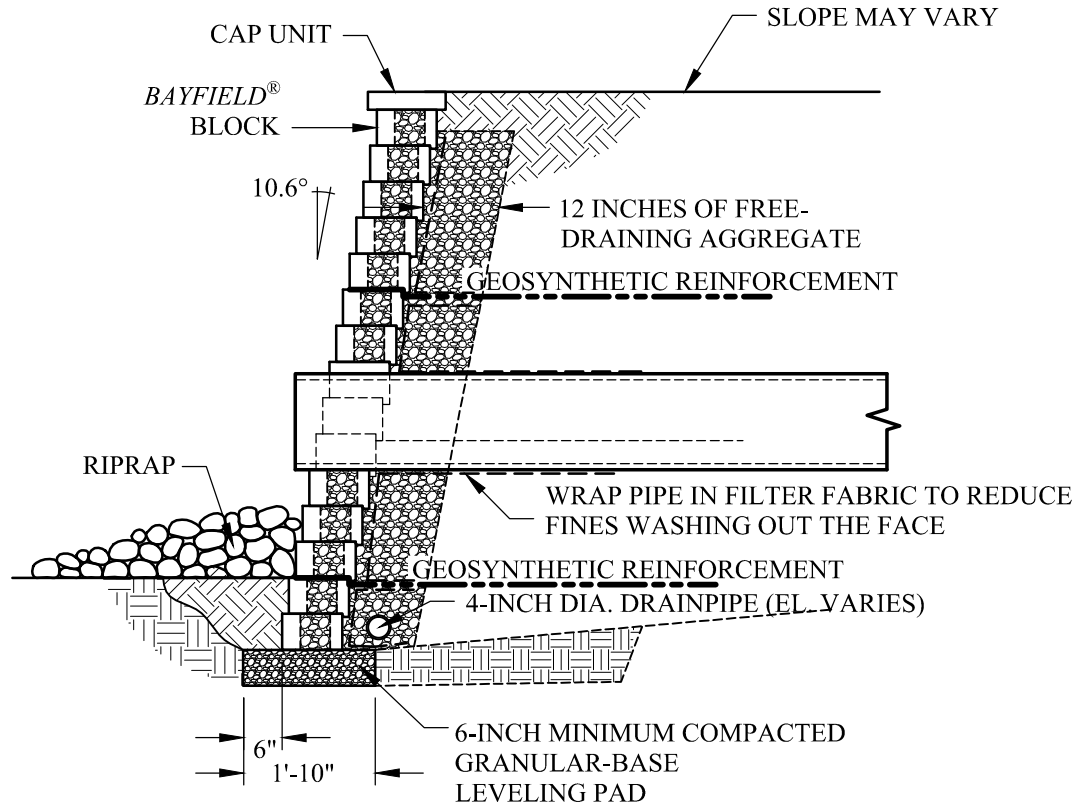


HAND-CUT BLOCK UNITS TO WITHIN 1/2-INCH OF PIPE



SCOUR PROTECTION AS REQUIRED. USE RIPRAP OR PRECAST SLAB IN OUTLET AREA DESIGNED BY OTHERS)

ELEVATION VIEW



SECTION VIEW



Anchor Wall Engineering, LLC  
5959 Baker Road, Suite 390  
Minnetonka, MN 55345

These graphic representations are intended for preliminary design purposes only and are not to be used for construction without the signature of a registered professional engineer.

© 2012 Anchor Wall Engineering, LLC  
® and ™ Anchor Wall Systems, Inc.

Drawn By: AWE  
Date: 3/1/2012  
Scale: 3/8"=1'-0"

Drawing Title: Bayfield® 6" Multipiece Retaining Wall System  
Utilities Through Wall Face -- Small Pipe

Project Information: Typical Details For  
Conventional Retaining Walls