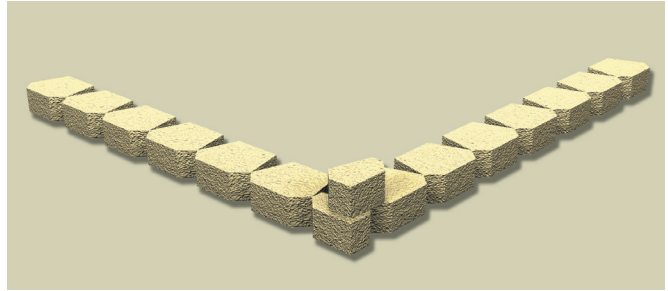


Corners—Outside 90°

SINGLE-PIECE SYSTEM INSTALLATION INSTRUCTIONS

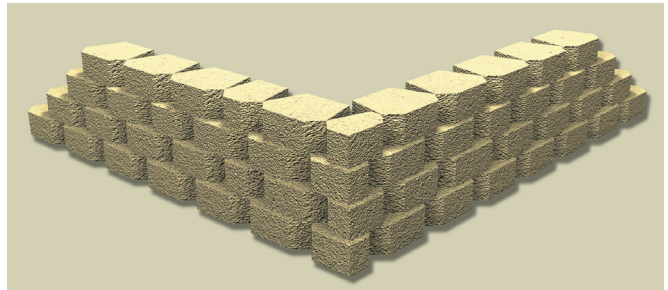
BASE COURSE

To build an outside 90° corner, begin by splitting* a unit in half. Place this unit with both split faces out at the corner. Remove the locator lip so that the block lies flat. Then lay the rest of the base course working from the corner block out.



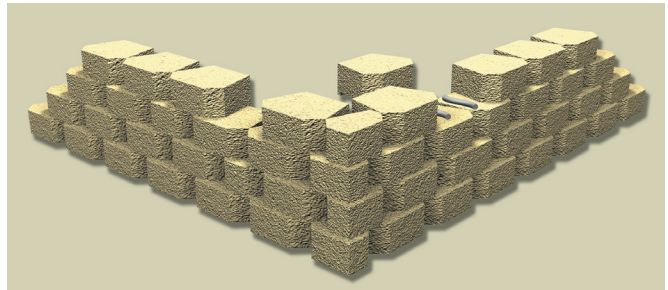
NEXT COURSE

Begin the next course with the other half of the split unit faced in the opposite direction at the corner. Place the second and third blocks on either side of the corner unit. Once the corner unit is in position, glue block in place with a concrete adhesive. Continue to alternate the corner unit orientation with each course and always use a concrete adhesive on the corner units.



RUNNING BOND

Use split units* as necessary to maintain running bond.



**To split a block, use a hydraulic splitter or split manually by using a hammer and chisel to score the block on all sides. Pound the chisel on the same line until the block splits. If partial unit sides are not exposed, use a circular cut-off saw with a masonry blade to achieve a tighter fit.*

© 2009 Anchor Wall Systems, Inc. Anchor™ retaining wall systems are manufactured under license from Anchor Wall Systems, Inc. (AWS). The “Anchor Build Something Beautiful” logo is a trademark of AWS. The wall system blocks are covered by the AWS Limited Warranty. For a complete copy, visit your local dealer or see anchorwall.com. All rights reserved.

Anchor Wall Systems, Inc., 5959 Baker Road, Suite 390, Minnetonka, MN 55345.
A&B0925 WSP906 08/09