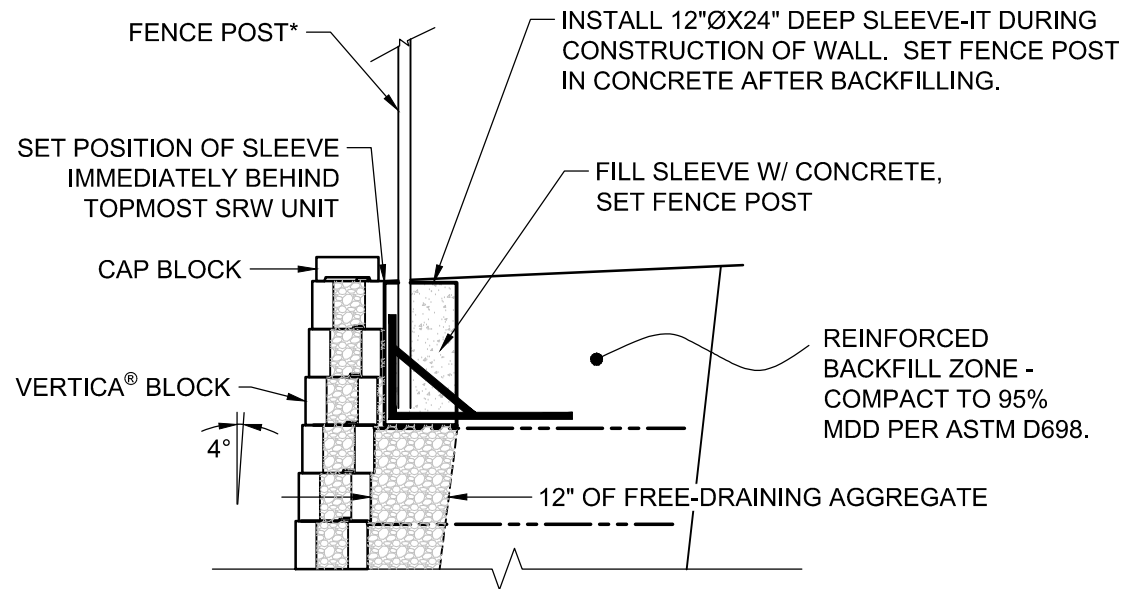


FOR MORE INFORMATION CONTACT: ADVANCED  
 HARDSCAPE SOLUTIONS LLC  
 1-866-843-0500 OR INFO@ADVANCEDHARDSCAPE.COM

- \*FENCING SYSTEMS APPROVED FOR USE WITH SLEEVE-IT ARE LIMITED TO THE FOLLOWING HEIGHTS:
- A. CHAIN LINK UP TO 8 FEET ABOVE FINISHED GRADE WITH POST SPACING OF 8 FEET (MIN).
  - B. ORNAMENTAL (STEEL, ALUMINUM, WROUGHT IRON) POST UP TO 6 FEET ABOVE GRADE WITH POST SPACING OF 10 FEET (MIN).
  - C. OPEN BOARD / GAP BOARD (70% OPEN) POST UP TO 6 FEET ABOVE FINISHED GRADE WITH POST SPACING OF 6 FEET (MIN).



© 2015 Anchor Wall Engineering, LLC  
 © and ™ Anchor Wall Systems, Inc.  
[www.anchorwall.com](http://www.anchorwall.com)

This drawing is for illustrative purposes only and should not be used for construction without the signature of a registered professional engineer.

## Vertica® Straight Face Retaining Wall System

### Fence Section with Sleeve-It

Scale:  
 3/8" = 1'-0"

Drawn by:  
 JB

Date:  
 ----

Drawing number:  
 VTST10