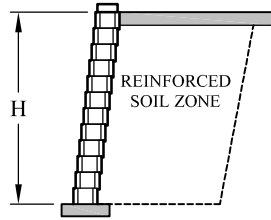


Vertica[®] Retaining Wall System

Estimating Chart for Geosynthetic Reinforcement

No Slopes and No Surcharges

FOR ESTIMATING PURPOSES ONLY - NOT FOR CONSTRUCTION



| | CLAY & SILT SOIL | SILTY / CLAYEY SAND SOIL | CLEAN SAND & GRAVEL SOIL |
|--------------------------------|---|--|--|
| H | $\phi = 26^\circ$ $\gamma = 120 \text{ pcf (19 kN/m}^3\text{)}$ | $\phi = 30^\circ$ $\gamma = 120 \text{ pcf (19 kN/m}^3\text{)}$ | $\phi = 34^\circ$ $\gamma = 120 \text{ pcf (19 kN/m}^3\text{)}$ |
| 4'-0" (1200 mm) 6 Courses | <p>4.5 FT (1350 mm) 4.5 FT (1350 mm) 4.5 FT (1350 mm)</p> | <p>4.0 FT (1200 mm) 4.0 FT (1200 mm)</p> | <p>4.0 FT (1200 mm) 4.0 FT (1200 mm)</p> |
| 6'-0" (1800 mm) 9 Courses | <p>6.0 FT (1800 mm) 6.0 FT (1800 mm) 6.0 FT (1800 mm) 6.0 FT (1800 mm)</p> | <p>5.5 FT (1650 mm) 5.5 FT (1650 mm) 5.5 FT (1650 mm)</p> | <p>5.0 FT (1500 mm) 5.0 FT (1500 mm) 5.0 FT (1500 mm)</p> |
| 8'-0" (2400 mm) 12 Courses | <p>7.0 FT (2100 mm) 7.0 FT (2100 mm) 7.0 FT (2100 mm) 7.0 FT (2100 mm) 7.0 FT (2100 mm) 7.0 FT (2100 mm)</p> | <p>6.5 FT (1950 mm) 6.5 FT (1950 mm) 6.5 FT (1950 mm) 6.5 FT (1950 mm)</p> | <p>6.0 FT (1800 mm) 6.0 FT (1800 mm) 6.0 FT (1800 mm) 6.0 FT (1800 mm) 6.0 FT (1800 mm)</p> |
| 10'-0" (3000 mm) 15 Courses | <p>9.0 FT (2700 mm) 9.0 FT (2700 mm) 9.0 FT (2700 mm) 9.0 FT (2700 mm) 9.0 FT (2700 mm) 9.0 FT (2700 mm) 9.0 FT (2700 mm)</p> | <p>8.0 FT (2400 mm) 8.0 FT (2400 mm) 8.0 FT (2400 mm) 8.0 FT (2400 mm) 8.0 FT (2400 mm) 8.0 FT (2400 mm)</p> | <p>7.5 FT (2250 mm) 7.5 FT (2250 mm) 7.5 FT (2250 mm) 7.5 FT (2250 mm) 7.5 FT (2250 mm) 7.5 FT (2250 mm)</p> |
| 12'-0" (3600 mm) 18 Courses | <p>Wall design to be performed by a professional engineer</p> | <p>9.0 FT (2700 mm) 9.0 FT (2700 mm) 9.0 FT (2700 mm) 9.0 FT (2700 mm) 9.0 FT (2700 mm) 9.0 FT (2700 mm)</p> | <p>8.5 FT (2550 mm) 8.5 FT (2550 mm) 8.5 FT (2550 mm) 8.5 FT (2550 mm) 8.5 FT (2550 mm) 8.5 FT (2550 mm)</p> |

© 2022 ANCHOR Diamond[®] retaining wall systems are manufactured under license from ANCHOR Diamond[®]. The wall system blocks are covered by the Anchor Diamond[®] Limited Warranty. For a complete copy, visit your local dealer or see anchordiamond.com. All rights reserved.

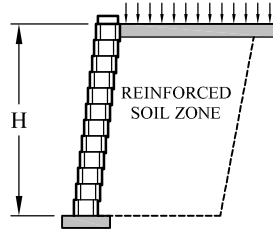
Anchor Diamond[®]
5909 Baker Rd., Suite 550 • Minnetonka, MN 55345
AWS22-253 10/22

Vertica[®] Retaining Wall System

Estimating Chart for Geosynthetic Reinforcement

250 PSF Surcharge

FOR ESTIMATING PURPOSES ONLY - NOT FOR CONSTRUCTION



| | CLAY & SILT SOIL | SILTY / CLAYEY SAND SOIL | CLEAN SAND & GRAVEL SOIL |
|--------------------------------|--|--|--|
| H | $\phi = 26^\circ$ $\gamma = 120 \text{ pcf (19 kN/m}^3\text{)}$ | $\phi = 30^\circ$ $\gamma = 120 \text{ pcf (19 kN/m}^3\text{)}$ | $\phi = 34^\circ$ $\gamma = 120 \text{ pcf (19 kN/m}^3\text{)}$ |
| 4'-0" (1200 mm) 6 Courses | | | |
| 6'-0" (1800 mm) 9 Courses | | | |
| 8'-0" (2400 mm) 12 Courses | | | |
| 10'-0" (3000 mm) 15 Courses | | | |
| 12'-0" (3600 mm) 18 Courses | | | |

© 2022 ANCHOR Diamond® retaining wall systems are manufactured under license from ANCHOR Diamond®.
 The wall system blocks are covered by the Anchor Diamond® Limited Warranty. For a complete copy, visit your
 local dealer or see anchordiamond.com. All rights reserved.

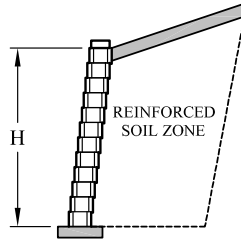
Anchor Diamond®
 5909 Baker Rd., Suite 550 • Minnetonka, MN 55345
 AWS22-253 10/22

Vertica[®] Retaining Wall System

Estimating Chart for Geosynthetic Reinforcement

3:1 Crest Slope

FOR ESTIMATING PURPOSES ONLY - NOT FOR CONSTRUCTION



| | CLAY & SILT SOIL | SILTY / CLAYEY SAND SOIL | CLEAN SAND & GRAVEL SOIL |
|--------------------------------|--|--|--|
| H | $\phi = 26^\circ$ $\gamma = 120 \text{ pcf (19 kN/m}^3\text{)}$ | $\phi = 30^\circ$ $\gamma = 120 \text{ pcf (19 kN/m}^3\text{)}$ | $\phi = 34^\circ$ $\gamma = 120 \text{ pcf (19 kN/m}^3\text{)}$ |
| 4'-0" (1200 mm) 6 Courses | | | |
| 6'-0" (1800 mm) 9 Courses | | | |
| 8'-0" (2400 mm) 12 Courses | | | |
| 10'-0" (3000 mm) 15 Courses | | | |
| 12'-0" (3600 mm) 18 Courses | | | |

© 2022 ANCHOR Diamond[®] retaining wall systems are manufactured under license from ANCHOR Diamond[®]. The wall system blocks are covered by the Anchor Diamond[®] Limited Warranty. For a complete copy, visit your local dealer or see anchordiamond.com. All rights reserved.

Anchor Diamond[®]
5909 Baker Rd. Suite 550 • Minnetonka, MN 55345
AWS22-253 10/22